



EXCHANGE CRESCENT

TO LET
GROUND FLOOR
NEWLY REFURBISHED
LANDMARK OFFICE
625 SQ M (6,723 SQ FT)
2 CAR SPACES



AHEAD OF THE CURVE

LOCATION

The Exchange District is Edinburgh's city centre commercial hub. With excellent public transport and amenities, it offers office occupiers a first class location attractive for staff and clients.

On the doorstep is Pure Gym, Hot Yoga, The Sheraton Hotel (including One Spa), All Bar One and Brewdog.

Occupiers in the building are from a diverse range of sectors and include Merkle Aquila, SolarWinds, Shepherd & Wedderburn, JLL, Colliers, Ryden and Moodys.



THE BUILDING

1 Exchange Crescent is a prestigious Grade A office which has been comprehensively refurbished to meet modern occupier needs.

The building offers large, flexible and efficient open plan floorplates which benefit from excellent levels of natural daylight.

The reception has been redesigned to incorporate modern finishes and offers a secure manned reception, together with new collaboration area.

The modern specification includes:

- New glazed speedgates in reception
- 3x 16 person lifts & a dedicated goods lift
- New male, female and accessible toilets
- New 4 pipe fan coil air-conditioning
- New recessed LED lights and controls
- New suspended metal grid and tile ceiling
- Metal raised access floor with min void of 150mm
- Clear floor to ceiling height of 2.7m
- Dual power supply with 2 No. 11 kV electricity supplies
- EPC - E
- Changing facilities, showers, bike racks and car parking are provided at basement level.

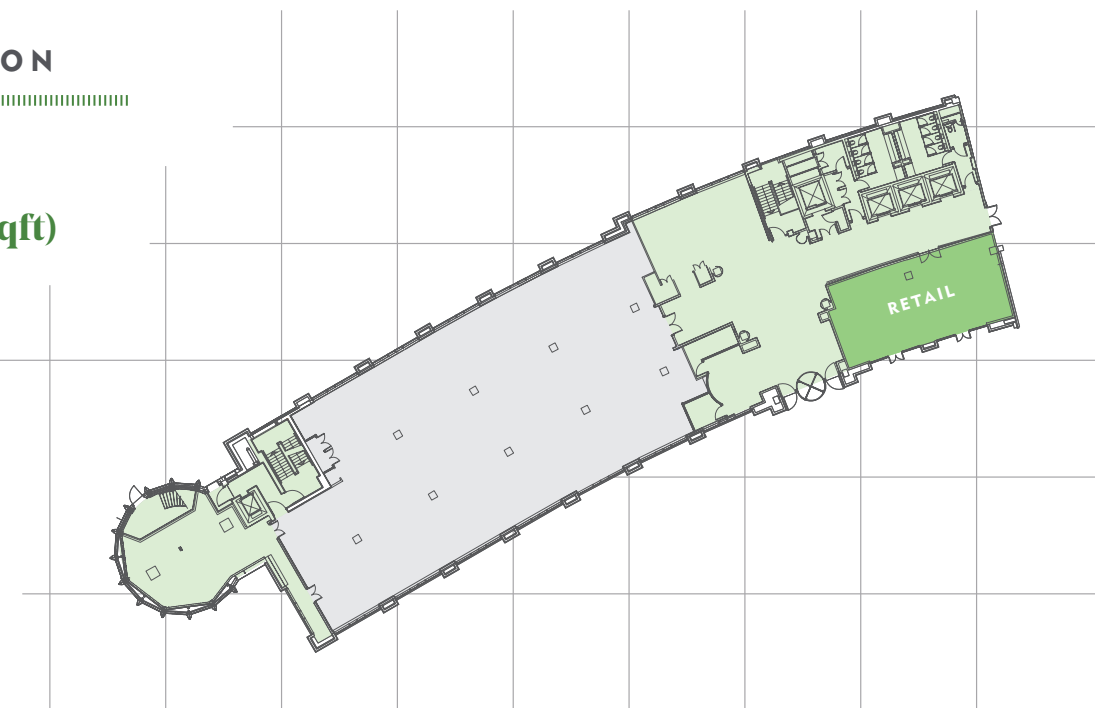


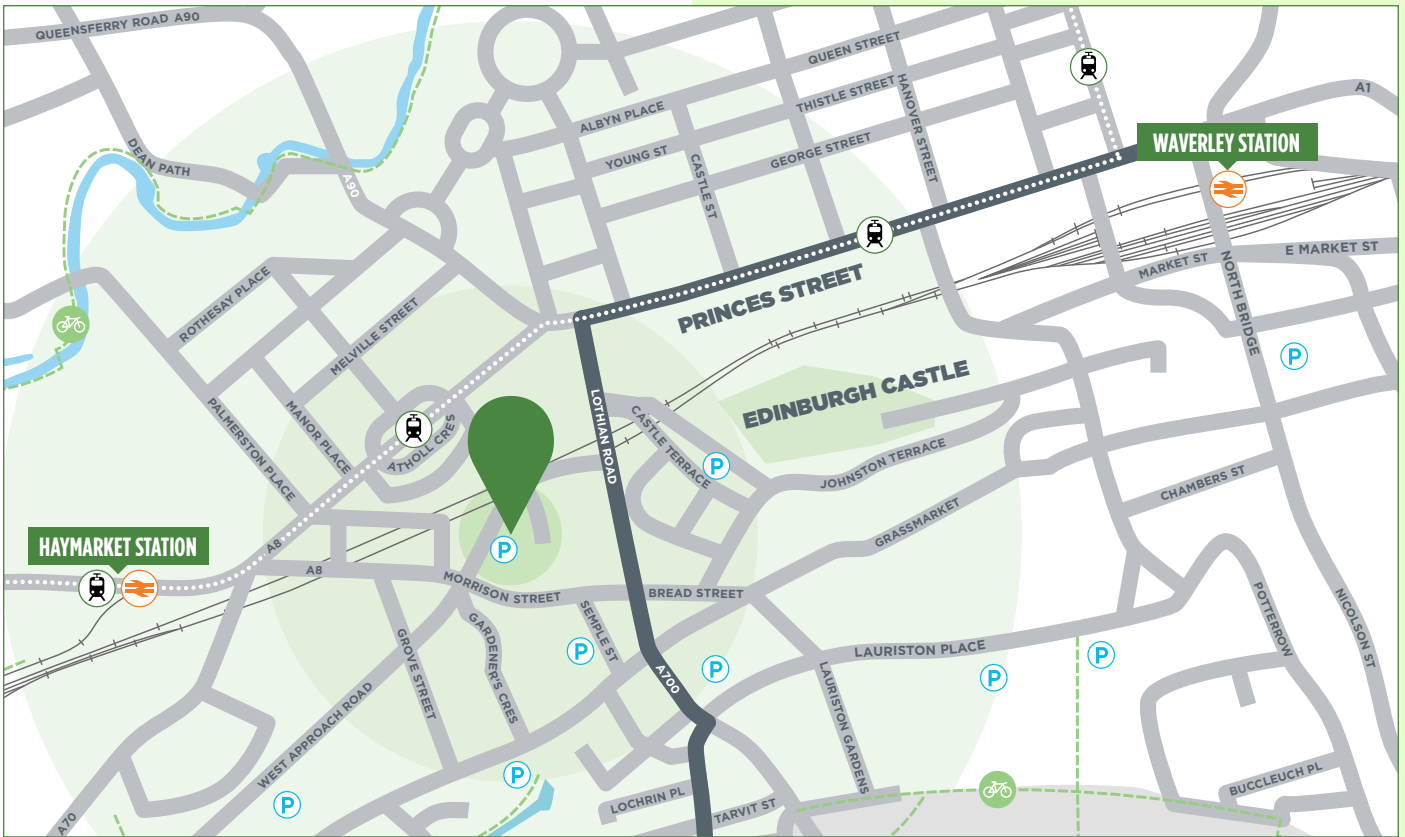
ACCOMMODATION

Ground floor
625 sqm (6,723 sqft)
2 car spaces

KEY

AVAILABLE SPACE
 COMMON AREAS





CONTACTS

Flexible lease terms are available. For further information please contact the joint letting agents

Angela Lowe

T +44 (0)131 243 4189
E angela.lowe@cbre.com

Craig Watson

T +44 (0)131 301 6711
E craig.watson@eu.jll.com

Stewart Taylor

T +44 (0)131 243 4180
E stewart.taylor@cbre.com

Ben Reed

T +44 (0)131 301 6712
E Ben.Reed@eu.jll.com



EXCHANGECRESCENT.COM

DISCLAIMER The agents for themselves and for the vendors or lessors of this property whose agents they are, give notice that:- a. the particulars are set out as a general outline only for guidance and do not constitute, nor constitute part of, an offer or contract; b. all descriptions, dimensions, references to condition and necessary permissions for use and occupation, and other details are believed to be correct, but any intending purchasers, tenants or third parties should not rely on them as statements or representations of fact but satisfy themselves that they are correct by inspection or otherwise; c. no person in the employment of the agents has any authority to make or give any representation or warranty whatever in relation to the property; d. Any images may be computer generated. Any photographs show only certain parts of the property as they appeared at the time they were taken. e. This correspondence is expressly subject to completion of formal legal missives in accordance with Scots Law. December 2019

